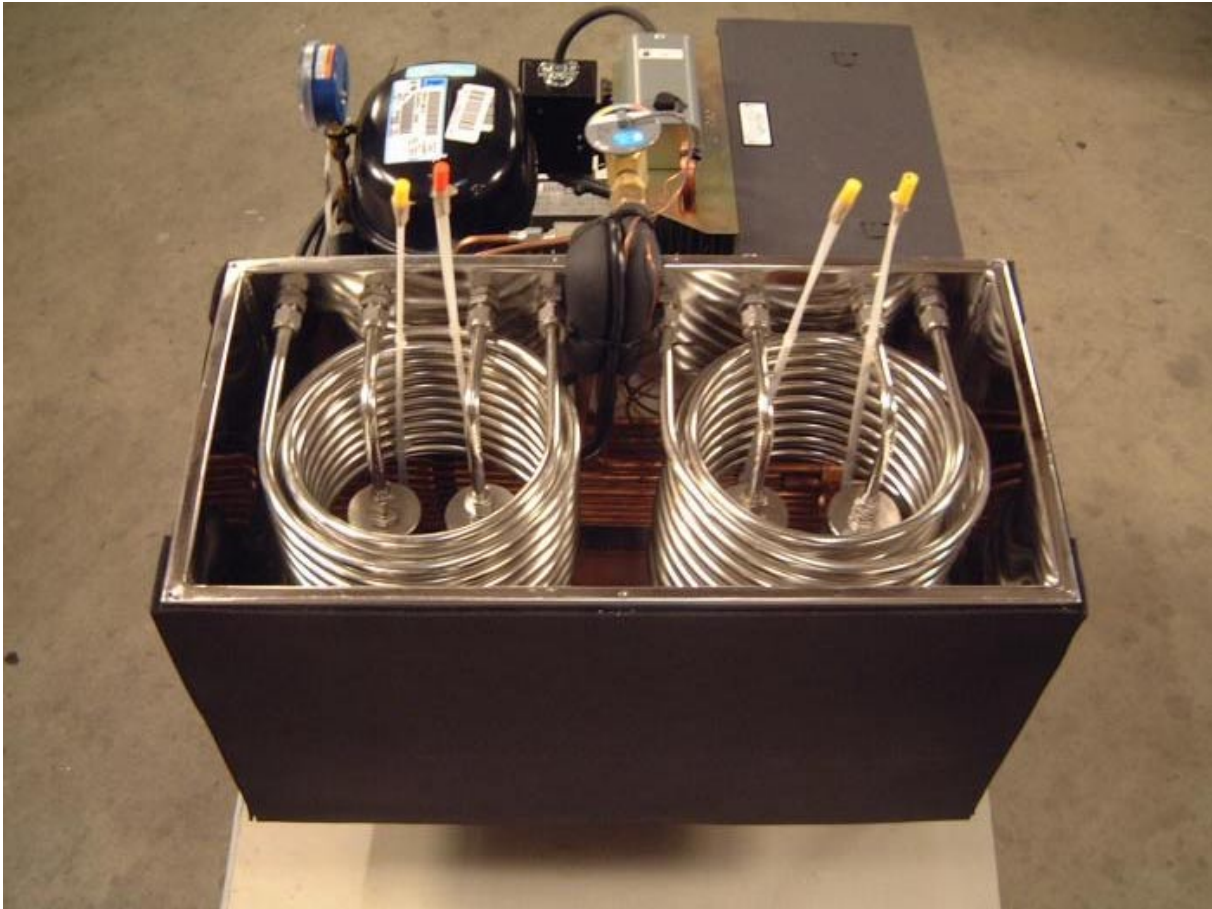


SAMPLE CONDITIONING WATER BATHS & CHILLERS



Webber EMI manufactures a variety of Water Baths [wet type] and Chillers [dry type]. Both types of sample conditioning units are designed to remove moisture from a sample gas before the gas is fed into an analyzer. The sample passes through a chilled coil to condense any vapor out of the gas and then through a trap to separate the moisture from the sample.

The Water Baths are available in multi-coil configurations with up to 6 sample lines per unit. The coils and traps are submerged in water that is chilled by a small refrigeration unit.

The Chillers are only available in single-coil configurations -- one sample line per unit. The double-wall coil uses refrigerant to directly chill the inner sample coil.

The basic 2-Coil Water Bath is ideal for most sample conditioning applications. The sample lines may be plumbed separately or in series to double the effectiveness.



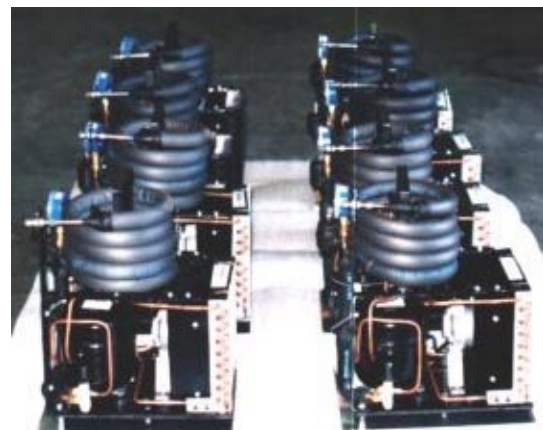
2-Coil Water Bath



4-Coil Water Bath

The 4-Coil Water Bath provides four separate gas sample lines. This unit is ideal for applications where multiple test samples are located within the same area.

Chillers use a double-walled coil to directly chill the inner sample coil. This configuration is ideal for use as a portable unit (no water to spill) or in applications that have only one test sample.



Dry Chillers Courtesy of CAI

Sample Conditioner Specs

<i>Water Baths</i>	<i>Chillers</i>
---------------------------	------------------------

Standard Features

Power Requirement
Dimensions
Number of Sample Lines
Sample Line Material
Sample Line Diameter
Sample Line Length
Sample Connection Fittings
Bath Temperature
Trap Capacity
Trap Material
Electrical Component Approvals

<i>3A / 110V / 60Hz</i>	<i>2A / 110V / 60Hz</i>
<i>17"H x 26"L x 22"D</i>	<i>21"H x 12"L x 12"D</i>
<i>2</i>	<i>1</i>
<i>Stainless steel</i>	<i>Stainless steel</i>
<i>1/4"</i>	<i>1/4"</i>
<i>20'</i>	<i>20'</i>
<i>Swagelok</i>	<i>Swagelok</i>
<i>45°F (7°C)</i>	<i>Sample-dependent</i>
<i>125 ml</i>	<i>50 ml</i>
<i>Stainless steel</i>	<i>Stainless steel</i>
<i>U.S., Canadian and/or European</i>	<i>U.S., Canadian and/or European</i>

Options

Power Requirement
Number of Sample Lines
Sample Line Diameters
Sample Line Material
Sample Connection Fittings
Bath Temperature
Trap Capacity

<i>220Vac, 50Hz</i>	<i>220Vac, 50Hz</i>
<i>1 - 6</i>	<i>1</i>
<i>3/8"</i>	<i>3/8"</i>
<i>HastAlloy, Teflon</i>	<i>--</i>
<i>Parker, Gyrolok</i>	<i>Parker, Gyrolok</i>
<i>37°F (3°C)</i>	<i>--</i>
<i>250 or 500 ml</i>	<i>100 ml</i>

